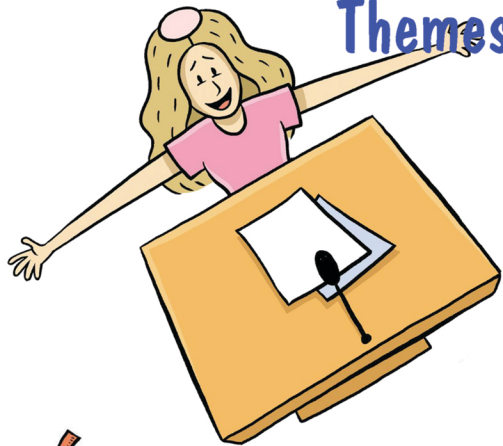


# **BECOMING BRIANNA**

**in the classroom**

# Themes in BECOMING BRIANNA



## Faith

Throughout the book, Brianna questions why she is having a bat mitzvah. As the story progresses, she starts to find meaning in it.

### Questions to ask:

- ✓ List some examples of how Bri starts to find meaning in the day.
- ✓ Bri likes a challenge. What are the challenges she faces as she prepares for her bat mitzvah?
- ✓ Bri isn't sure she wants to have a bat mitzvah but ultimately decides to. Have you ever taken a "leap of faith" and did something unexpected? Was it worth it?
- ✓ How does the book title reflect the story? What would the title of YOUR story be?



# Community

In the story, Bri learns who has her back and who doesn't. She ultimately finds her "tribe."

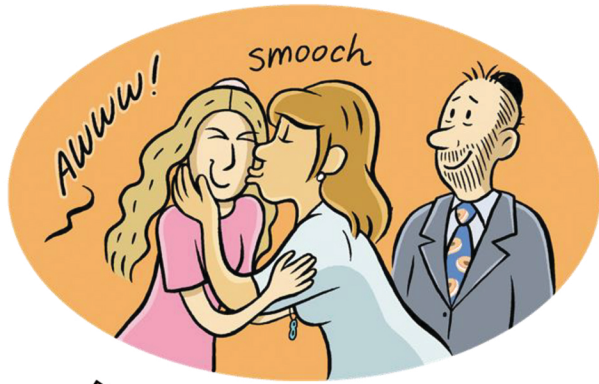
## Questions to ask:

✓ What are some ways Bri's friendships are tested?  
Activity: pick a character whose viewpoint isn't featured and write a short story from their perspective.

✓ Bri's mother relays a story from her past about how she found her community. How is Bri's story similar? Different?

✓ Who are the people in Bri's closeknit "community" and why? Who are in YOURS?

✓ Do you think everyone in a community has to be similar? Why?



# Relationships

The story highlights the many ups and downs of Bri's relationships with friends and family.

## Questions to ask:

- ✓ What are Bri's most significant relationships in the book and how do they evolve?
- ✓ Emmie and Dev warn Bri that popular Zoe is using her, but Bri doesn't want to listen. Do you know why? Activity: write an advice column to Bri (like Dear Abby).
- ✓ Bri experiences many relationship conflicts and resolutions. Describe three. Activity: Draw a comic strip or write a short story about a relationship conflict and resolve it in your own way (good or bad).
- ✓ Bri and Em have their issues, but they always work it out. Which character from the book would you most like to be friends with and why (psst, it can be an adult!)?